

PLAN T1658

# PLAN of SUBDIVISION OF A PORTION OF BLOCK 4 DISTRICT LOT 847 GROUP 1 NEW WESTMINSTER DISTRICT PLAN 3488.

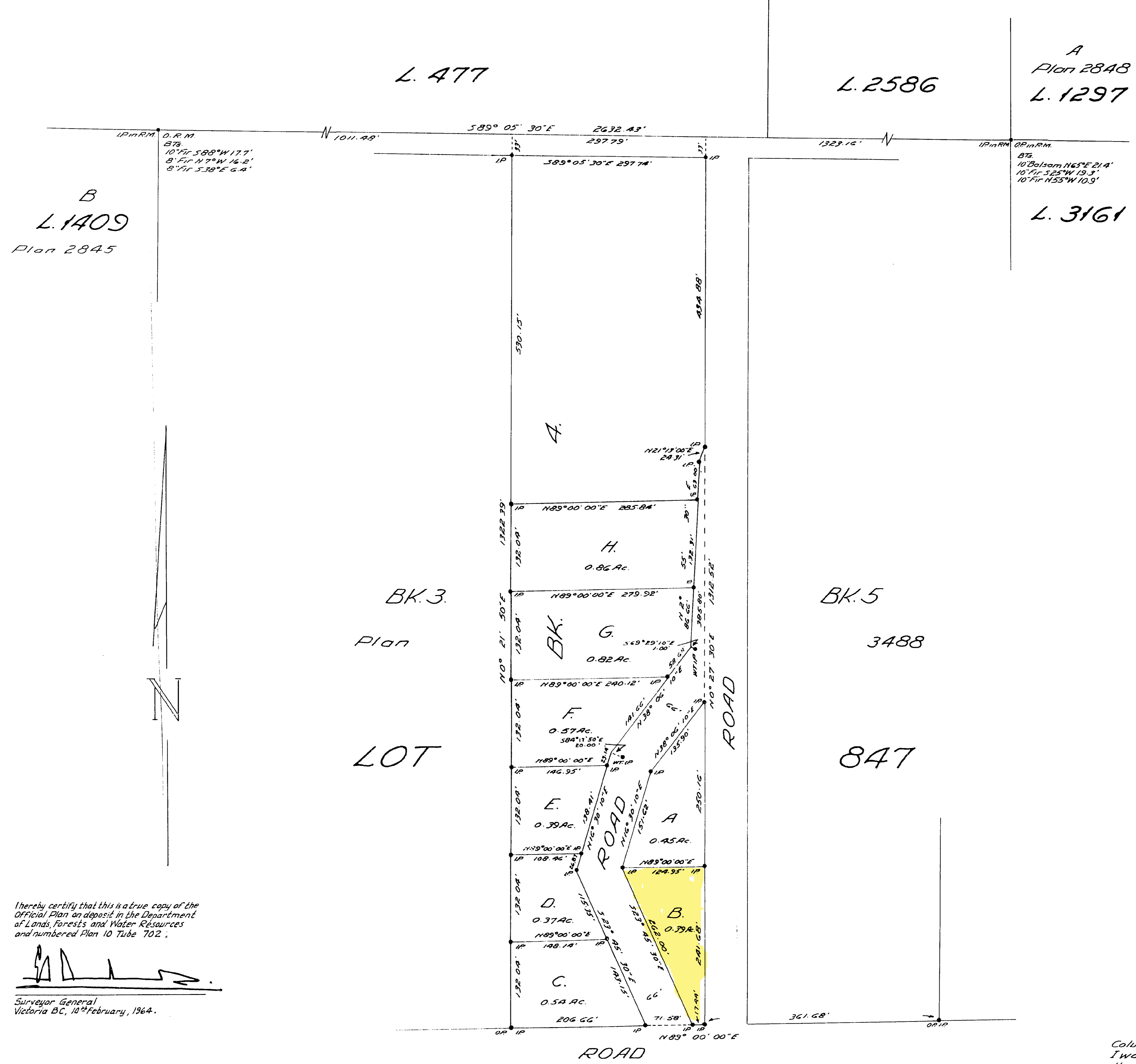
Scale: 1 inch = 100 feet.

Deposited in the Land Registry Office  
of Vancouver, B.C. this 2<sup>nd</sup> day of APRIL  
1964 Pursuant to Section 71, Land Registry Act

*Ad Smith*  
REGISTRAR.

**Legend**  
Bearings derived from Plan 3488.  
• IP denotes iron pin set  
• OP denotes wooden post found.  
• R.M. denotes rock mound.

PORTION OF CLOSED ROAD (OF THE 1001)  
DEDICATED BY THE DEPOSIT OF PLAN 2845,  
FOR PART OF LOTS A, B & H - DECEMBER 1963.  
D.H. Stud. W.M.



I hereby certify that this is a true copy of the  
Official Plan as deposited in the Department  
of Lands, Forests and Water Resources  
and numbered Plan 10 Tube 702.

*[Signature]*  
Surveyor General  
Victoria B.C., 10<sup>th</sup> February, 1964.

Approved under the Land Registry Act  
this 2<sup>nd</sup> day of APRIL 1964.

*[Signature]*  
APPROVING OFFICER,  
ACTING ASSISTANT CHIEF ENGINEER,  
DEPARTMENT OF HIGHWAYS

I, G.T. Mullin, of the City of Victoria, British  
Columbia Land Surveyor, make oath and say that  
I was present at and did personally superintend  
the survey represented by this plan, and that the  
survey and plan are correct.

The said survey was completed on the  
5<sup>th</sup> day of December 1963.

Sworn before me this  
30<sup>th</sup> day of January 1964. *[Signature]*

*[Signature]*  
A Commissioner for taking affidavits  
within British Columbia.

**WETJLOW**